

NEW

napure[®] MIRROR

"Napure Mirror" is a high-class mirror more excellent than others and reflects the real color of your skin as seen by others.

PAT.3732490

Napure HAIR CHECK-UP MIRROR

For permanently keeping your beautiful hair
You can check the top of your head and the hair whorl.
Convenient for hair dyeing and wearing a wig.



For daily makeup...



For hair dyeing...



For wearing a wig...

Napure Mirror reflects the real color of your skin as seen by others. Good for your daily makeup!

The bottom mirror reflects the top of your head and the hair whorl. You can easily dye your hair or wear a wig with best finish.

Designed in a small size

For your daily makeup as a stand mirror



Foldable for conveniently putting in your bag



HCM-1s

silver



HCM-1ro

rose pink

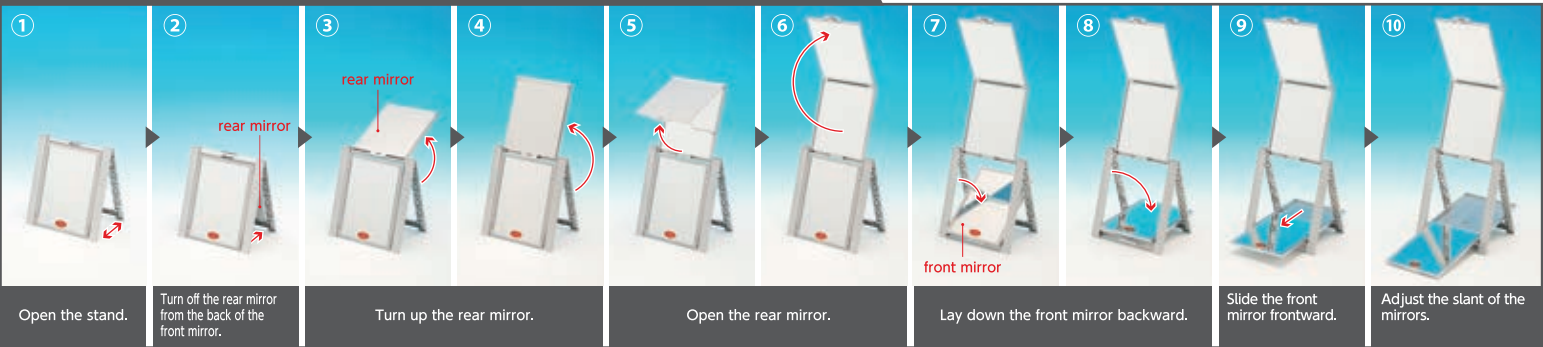


HCM-1bk

black

Usage of HAIR CHECK-UP MIRROR

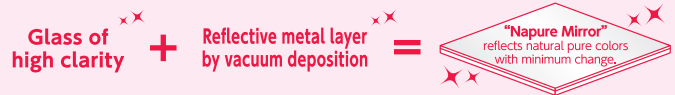
*Do not lift the frame not to make the front mirror slide off the frame.



What is "Napure Mirror"?

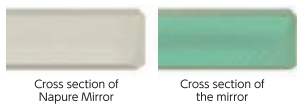
The mirror reflecting the real color of your skin as seen by others

The most suitable mirror for matching the colors of your skin and afoundation and for partial makeup



Glass of high clarity

The glass used for the conventional mirrors contains considerable amount of iron to absorb blue light of the incident light and make white color look dull. We have developed "Napure Mirror" made of clear glass with minimum iron content. "Napure Mirror" rarely changes the reflected colors to show natural and pure colors without influence by the glass. Thus "Napure Mirror" is the most suitable for matching the foundation to the colors of your skin and partial makeup.



Cross section of Napure Mirror

Cross section of the mirror



Napure Mirror (in our test)

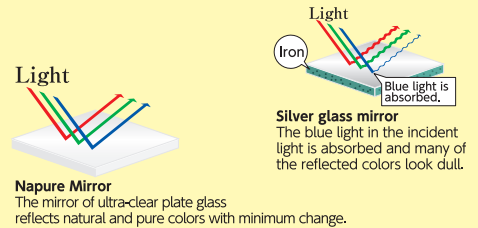
Reflects real color of human skin with minimum color change.



Conventional silver glass mirror (in our test)

White color is reflected into slightly yellowish white and other colors are reflected colors look dull.

Comparison in reflection (in our test)



Napure Mirror

The mirror of ultra-clear plate glass reflects natural and pure colors with minimum change.

*The photo shows an image of reflection.

HAIR CHECK-UP MIRROR

*The specification and suggested retail price may be changed.

Product name	Item Code.	Suggested retail price	Size	Color	JAN	Quantity per carton	Material
HAIR CHECK-UP MIRROR Napure Mirror	HCM-1	¥5,000 and tax	[Product] w176mm×H196mm×D20mm (The longest: about w176mm×H490mm×D320mm) [Package] w188mm×H205mm×D32mm	Silver Rose pink Black	773586 773609 773616	24	[Frame] ABS resin [Mirror] Napure Mirror

*Do not give impact to the mirrors by dropping off, etc. Impacted mirrors may break and hurt the user. *The metal parts of the mirrors are deteriorated when stored at high temperature and humidity for a long time. *Chemicals sticking on the mirrors must be wiped off with dry cloth.

*Each of the "JAN codes" given in six digits in this catalogue constitutes the product code and check digit, and follows the code, 4510510 indicating the country and manufacturer codes.